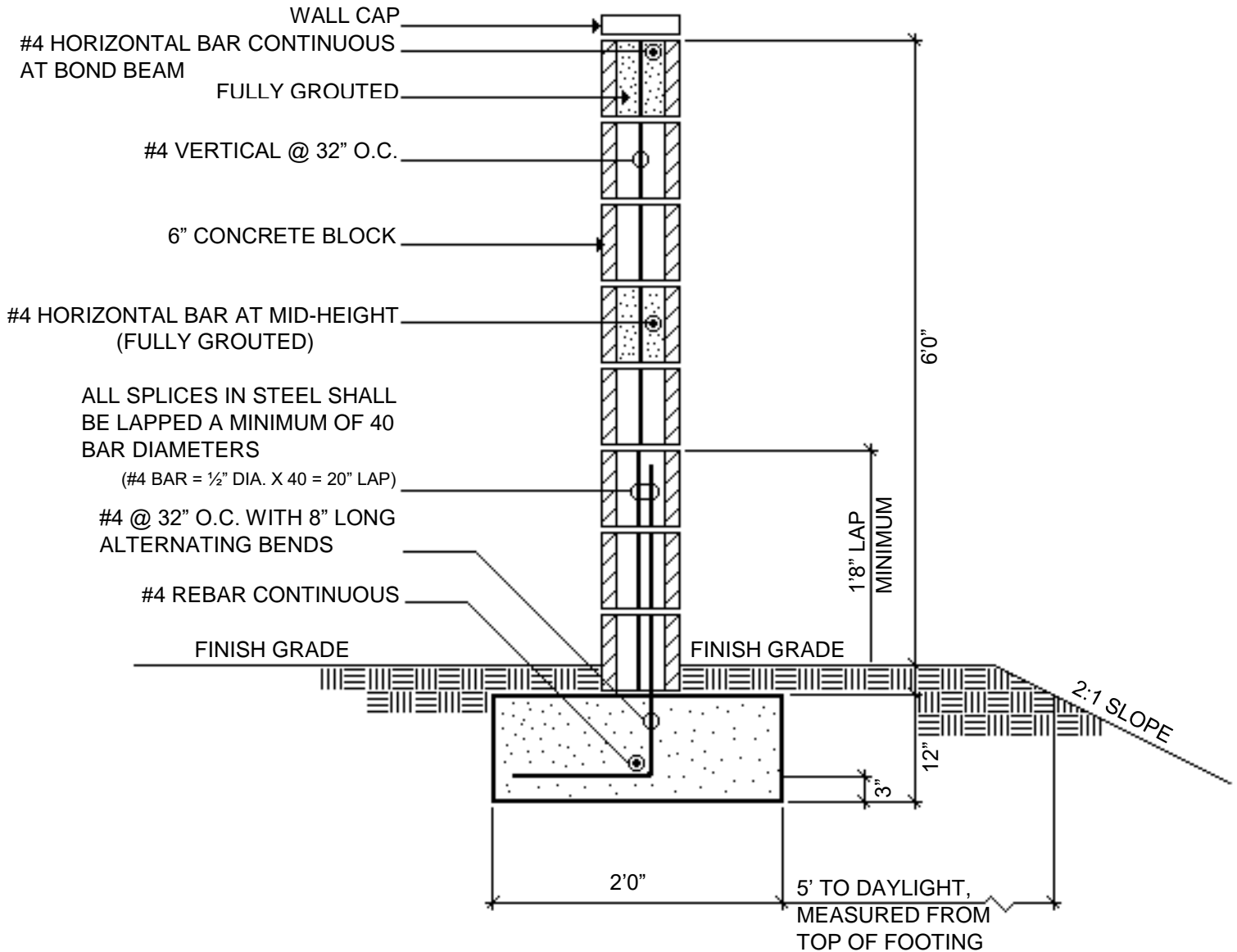




# GARDEN WALL STANDARD DETAIL



## NOTES

1. Concrete block shall be grade "N" units conforming to ASTM Standard C90-52.
2. Concrete and grout shall attain 2,000 psi compressive strength at 28 days.
3. All cells with rebar to be grouted solid.
4. Provide an expansion joint every 25' to 30'. Do **NOT** extend steel of bond beam through joints.
5. Provide adequate drainage behind wall (Do **NOT** block drainage).
6. Planning Division approval is required for all fences and walls, prior to permit issuance.