



# ATTACHED PATIO COVER

## LIGHT ROOF COVERING

(COMP. SHINGLES, LATTICE, FIBERGLASS, ALUMINUM)

Revised:

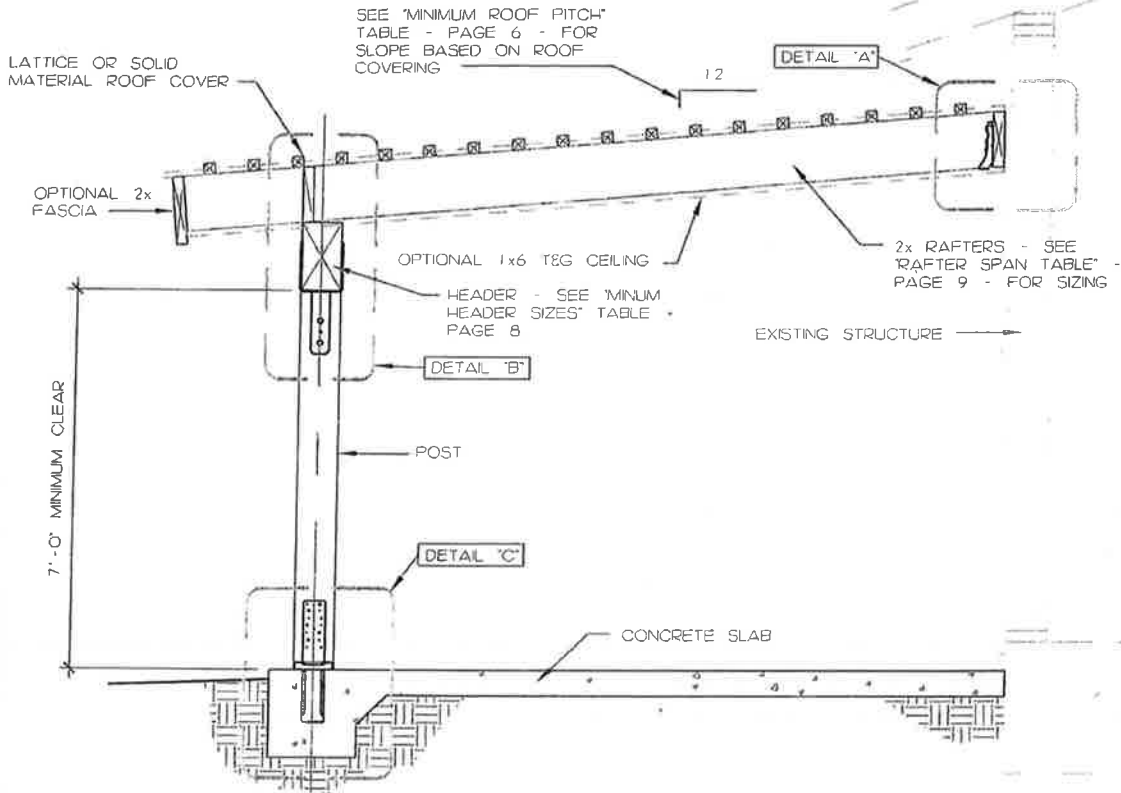
Drawing No:

Approved:

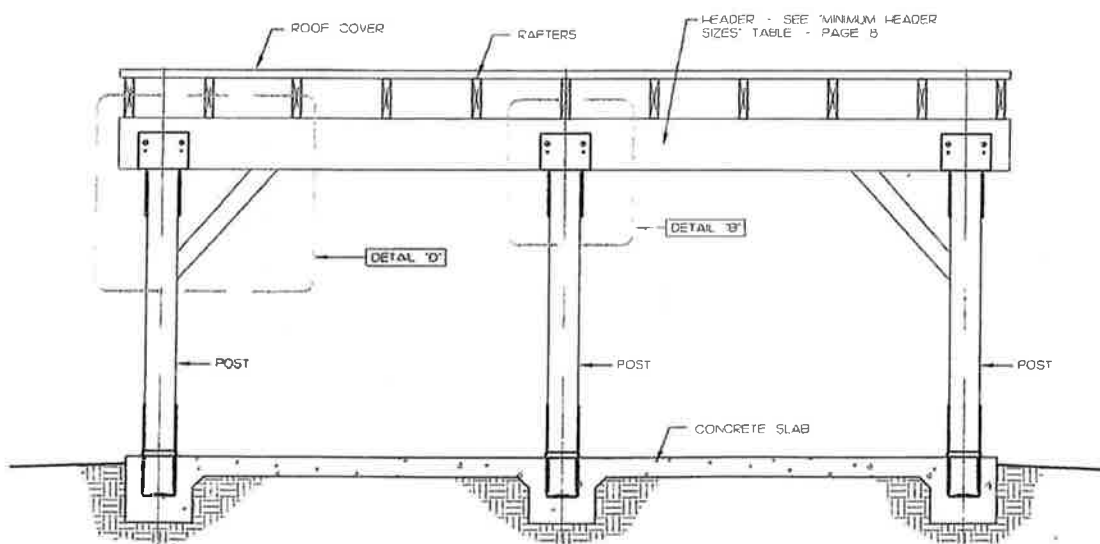
20

Date 4/4/13

Pg 1 of 9



CROSS SECTION



FRONT VIEW

# ATTACHED PATIO COVER

## LIGHT ROOF COVERING

(COMP. SHINGLES, LATTICE, FIBERGLASS, ALUMINUM)

Revised:

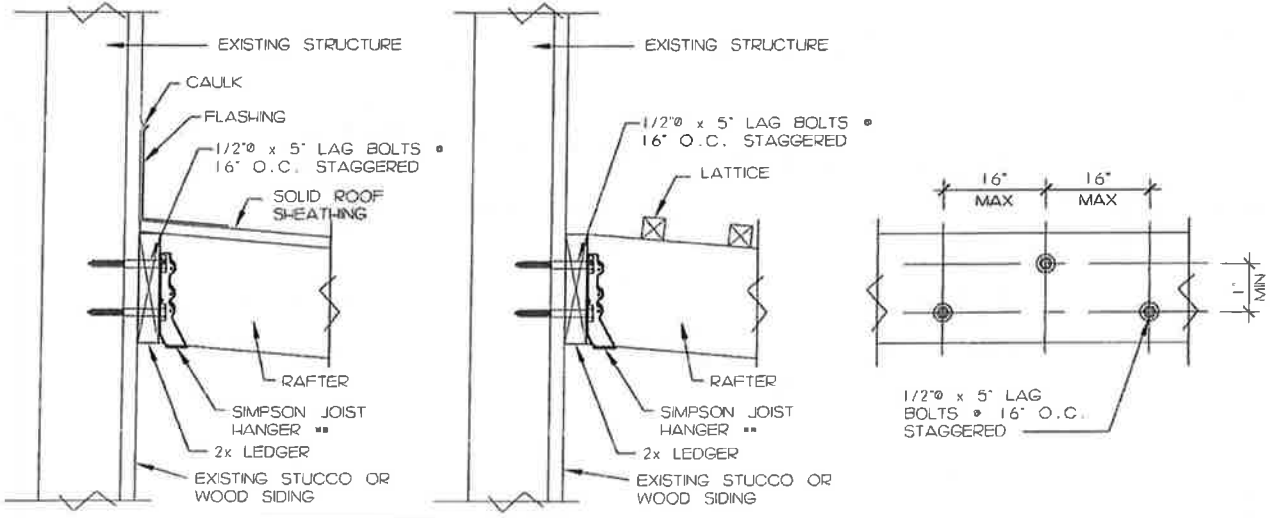
Drawing No:

Approved:

20

Date 4/4/13

Pg 2 of 9



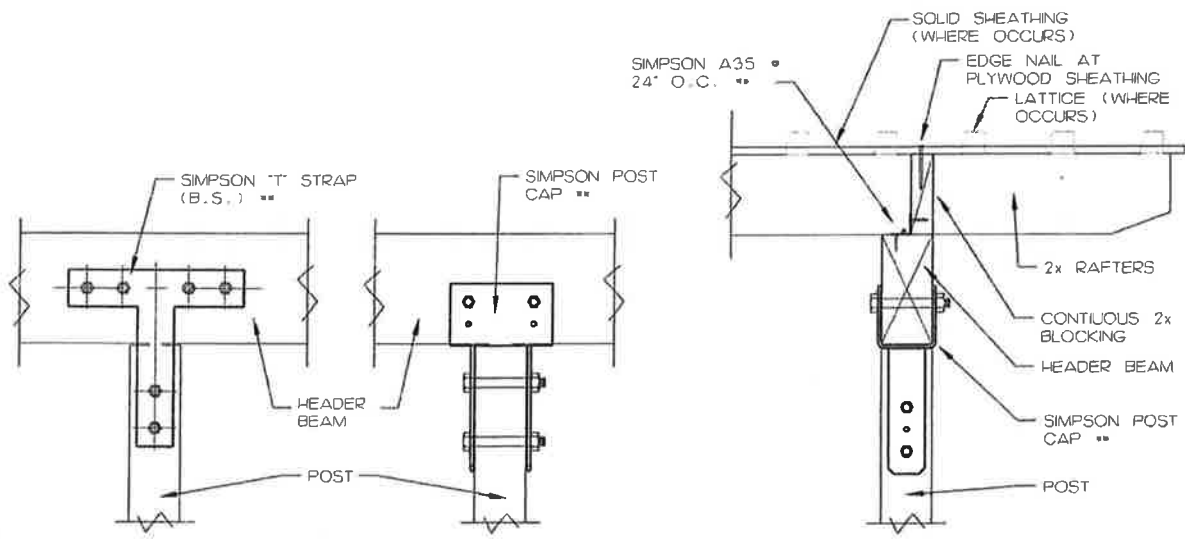
\*\* HARDWARE FASTENERS PER MANUFACTURER SPECIFICATIONS

SECTION WITH SOLID SHEATHING

SECTION WITH LATTICE

FACE VIEW AT LEDGER

### DETAIL "A" - LEDGER CONNECTION



\*\* HARDWARE FASTENERS PER MANUFACTURER SPECIFICATIONS

FACE VIEW

SECTION VIEW

### DETAIL "B" - COLUMN TO BEAM CONNECTION

# ATTACHED PATIO COVER

LIGHT ROOF COVERING  
(COMP. SHINGLES, LATTICE, FIBERGLASS, ALUMINUM)

Revised:

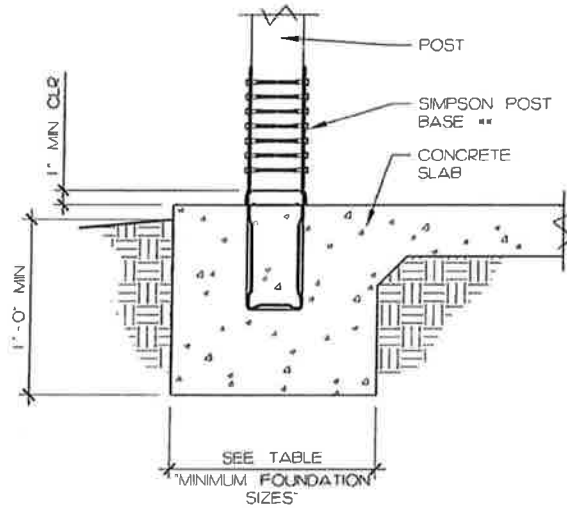
Drawing No:

Approved:

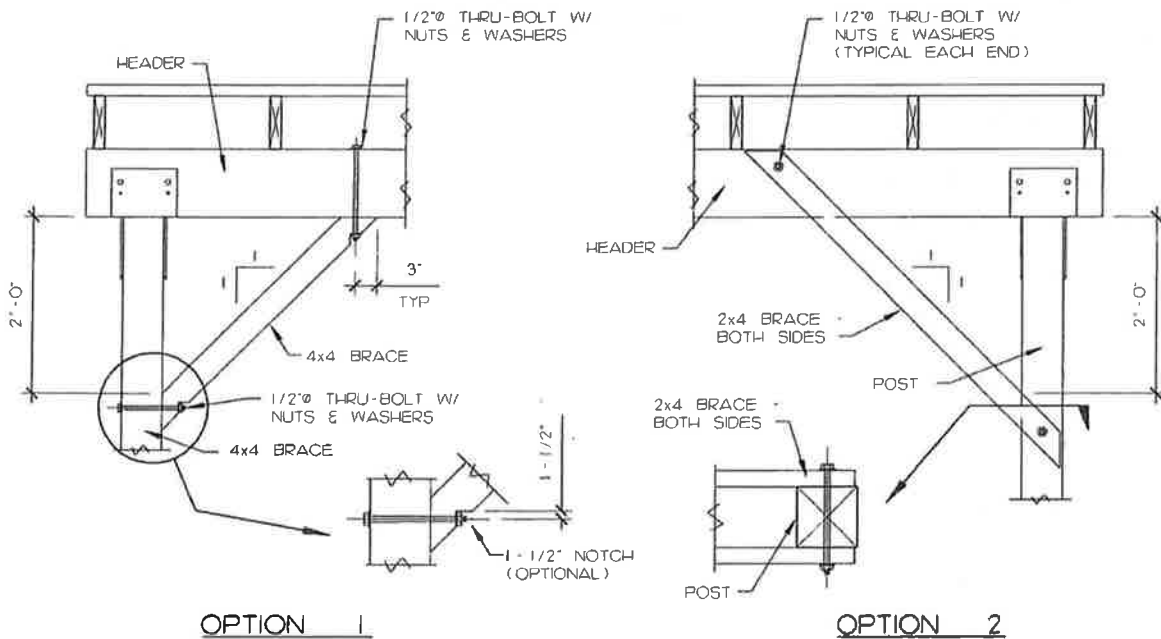
20

Date 4/4/13

Pg 3 of 9



## DETAIL "C" - POST BASE AND FOOTING



## DETAIL "D" - KNEE BRACE DETAIL

# ATTACHED PATIO COVER

## LIGHT ROOF COVERING

(COMP. SHINGLES, LATTICE, FIBERGLASS, ALUMINUM)

Revised:

Drawing No:

Approved:

20

Date 4/4/13

Pg 4 of 9

### NOTES:

#### CONSTRUCTION REQUIREMENTS

1. Maximum roof overhang - 2'-0".
2. Roof covering fire rating: Class "A" minimum.
3. Do not install the roof covering prior to roof sheathing nailing inspection.
4. All required bolts and nails shall be installed in metal connectors as required by the manufacturer at the framing inspection.
5. No portion of the construction, including foundation excavations, nailing or connections may be covered prior to inspection by the City Building Inspector.
6. A 1x6 T&G ceiling may be installed as an option. Specify on the plans.
7. No modifications are allowed to this standard. Should any modifications be made to this standard, the entire patio structure shall be designed and stamped by a California Registered Professional Engineer.

#### REQUIRED INSPECTIONS

1. Foundation Inspection: Footings excavated with any reinforcing steel placed and supported. Post Base Brackets placed near the footings ready to be inserted during concrete pour. Patio cover location and dimensions verified.
2. Framing Inspection: All wood framing installed with all connections installed and all nailing completed. Roof covering material is not installed.
3. Rough Electrical Inspection (If any electrical systems are to be installed with the patio cover): All wiring, conduit, electrical boxes installed.
4. Final Inspection. All framing, connections, nailing and roofing installed. If electrical systems are included, all switches, outlets, lighting fixtures, circuit connections to the existing electrical service installed and completed.

#### MATERIAL SPECIFICATIONS

Lumber Grade and Species: Douglas Fir-Larch No. 1 or Better.

Concrete: Minimum 4,000 psi, Type V Cement.

Metal Connectors: Simpson Strong Tie or approved equal.

#### DESIGN CRITERIA:

2010 California Building Code, 2010 California Residential Code with City of Yorba Linda amendments.

Dead Load: 12.0 psf.

Live Load: 10.0 psf.

Soil Bearing Value: 1,500 psf.

Wind Loading: 85 mph, Exposure "C".

# ATTACHED PATIO COVER

## LIGHT ROOF COVERING

(COMP. SHINGLES, LATTICE, FIBERGLASS, ALUMINUM)

Revised:

Drawing No:

Approved:

20

Date 4/4/13

Pg 5 of 9

### SUMMARY OF MATERIALS:

#### ROOF COVERING

Roof Slope: \_\_\_\_\_

Roof Deck: \_\_\_\_\_ x \_\_\_\_\_ Lattice • \_\_\_\_\_ O.C.

\_\_\_\_\_ Plywood or OSB

Rafters: \_\_\_\_\_ x \_\_\_\_\_ at \_\_\_\_\_ O.C.

Header: \_\_\_\_\_ x \_\_\_\_\_ with \_\_\_\_\_ Maximum Span

Posts: \_\_\_\_\_ x \_\_\_\_\_ at \_\_\_\_\_ O.C. (Maximum Spacing)

Foundation: \_\_\_\_\_ x \_\_\_\_\_ x 12" Below Grade (minimum)

# ATTACHED PATIO COVER

## LIGHT ROOF COVERING

(COMP. SHINGLES, LATTICE, FIBERGLASS, ALUMINUM)

Revised:

Drawing No:

Approved:

20

Date 4/4/13

Pg 6 of 9

### MINIMUM ROOF PITCH

ROOF COVERING MATERIAL	MINIMUM ROOF PITCH
Asphalt Shingles	2 : 12
Metal Roof (lapped, nonsoldered seam without lap sealant)	3 : 12
Metal Roof (lapped, nonsoldered seam with lap sealant)	1/2 : 12
Metal Roof (standing seam)	1/4 : 12
Metal Roof Shingles	3 : 12
Mineral Surface Roll Roofing	1 : 12
Built-up Roofs	1/4 : 12
Modified Bitumen Roofs	1/4 : 12
Open Lattice	0 : 12

# ATTACHED PATIO COVER

## LIGHT ROOF COVERING

(COMP. SHINGLES, LATTICE, FIBERGLASS, ALUMINUM)

Revised:

Approved:

Date 4/4/13

Drawing No:

20

Pg 7 of 9

RAFTER SPAN POST SPACING	6'	7'	8'	9'	10'	11'	12'	13'	14'	15'	16'	17'	18'	19'	20'	21'
5'	SLAB OR 12"	SLAB OR 12"	SLAB OR 12"	SLAB OR 12"	12"	12"	12"	12"	12"	12"	12"	12"	12"	12"	12"	12"
6'	SLAB OR 12"	SLAB OR 12"	12"	12"	12"	12"	12"	12"	12"	12"	12"	12"	12"	12"	12"	12"
7'	12"	12"	12"	12"	12"	12"	12"	12"	12"	12"	12"	12"	12"	12"	12"	12"
8'	12"	12"	12"	12"	12"	12"	12"	12"	12"	12"	12"	12"	12"	12"	12"	12"
9'	12"	12"	12"	12"	12"	12"	12"	12"	12"	12"	12"	12"	12"	12"	12"	12"
10'	12"	12"	12"	12"	12"	12"	12"	12"	12"	12"	12"	12"	12"	12"	12"	12"
11'	12"	12"	12"	12"	12"	12"	12"	12"	12"	12"	12"	12"	12"	12"	12"	12"
12'	12"	12"	12"	12"	12"	12"	12"	12"	12"	12"	12"	12"	12"	12"	12"	12"
13'	12"	12"	12"	12"	12"	12"	12"	12"	12"	12"	12"	12"	12"	12"	12"	12"
14'	13"	13"	13"	13"	13"	13"	13"	13"	13"	13"	13"	13"	13"	13"	13"	13"
15'	13"	14"	14"	14"	14"	14"	14"	14"	14"	14"	14"	14"	14"	14"	14"	14"
16'	14"	14"	14"	14"	14"	14"	14"	14"	14"	14"	14"	14"	14"	14"	14"	14"
17'	14"	14"	14"	14"	14"	14"	14"	14"	14"	14"	14"	14"	14"	14"	14"	14"

Minimum Foundation Sizes

(Inches Square x 12" Deep)

# ATTACHED PATIO COVER

LIGHT ROOF COVERING  
(COMP. SHINGLES, LATTICE, FIBERGLASS, ALUMINUM)

Revised:

Drawing No:

Approved:

20

Date 4/4/13

Pg 8 of 9

RAFTER SPAN POST SPACING	5'	6'	7'	8'	9'	10'	11'	12'	13'	14'	15'	16'	17'
5'													
6'													
7'													
8'													
9'													
10'													
11'													
12'													
13'													
14'													
15'													
16'													
17'													

4x6

4x8

4x10

4x12

6x12

Minimum Header Sizes



# ATTACHED PATIO COVER

## LIGHT ROOF COVERING

(COMP. SHINGLES, LATTICE, FIBERGLASS, ALUMINUM)

Revised:

Drawing No:

Approved:

20

Date 4/4/13

Pg 9 of 9

Rafter Span		
Size	Spacing	Max Span
2x4	12"	10' - 6"
	16"	9' - 8"
	24"	8' - 3"
2x6	12"	16' - 2"
	16"	14' - 3"
	24"	11' - 9"
2x8	12"	18' - 10"
	16"	16' - 10"
	24"	14' - 3"
2x10	12"	20' - 9"
	16"	17' - 9"
	24"	16' - 1"

Rafter Span Table

